

MONTHLY MEMBERSHIP PROGRESS REPORT

LOCATION COLORADO

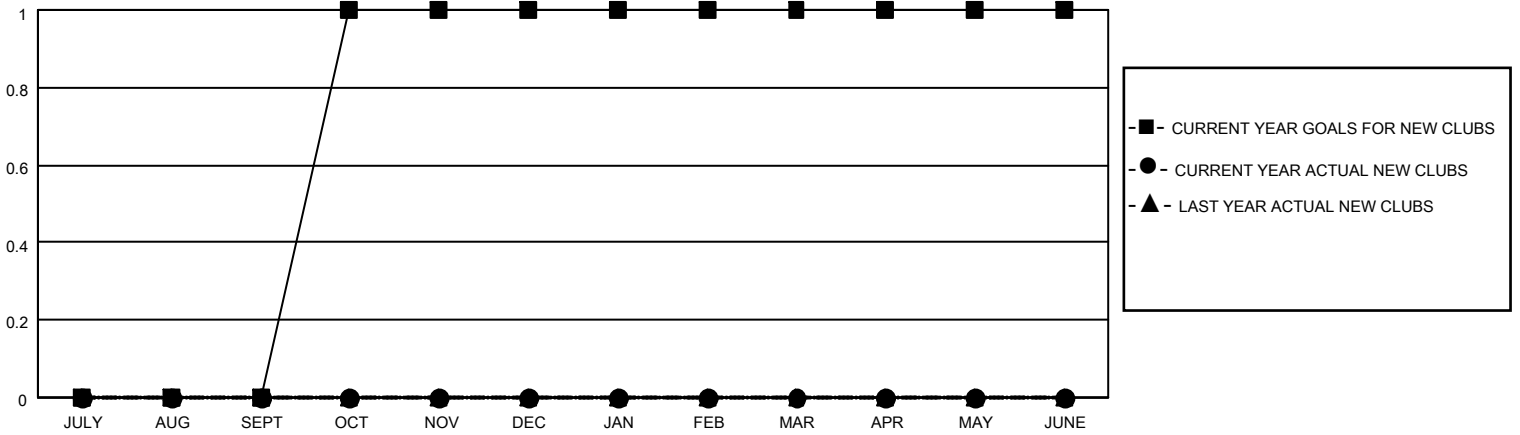
District 6 W

Results as of: 5/31/2023

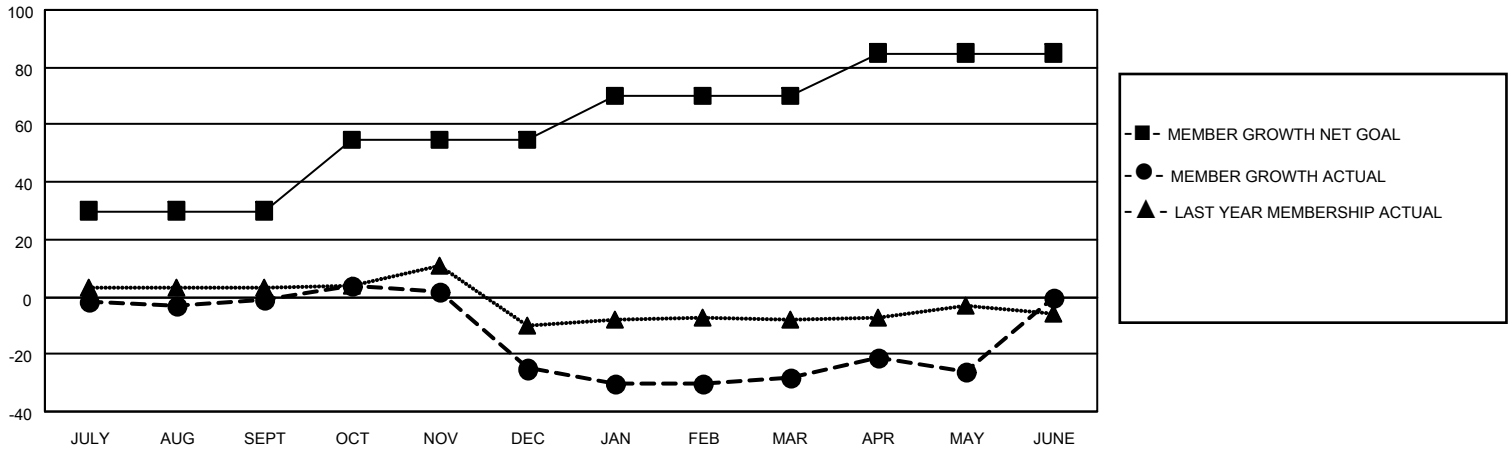
| Clubs | | | |
|-----------------------|---------------|-----------|---------------|
| RESULTS FOR 2022-2023 | | | |
| QUARTER | NEW CLUB GOAL | NEW CLUBS | DROPPED CLUBS |
| JULY/AUG/SEPT | 0 | 0 | 0 |
| OCT/NOV/DEC | 1 | 0 | 0 |
| JAN/FEB/MAR | 0 | 0 | 0 |
| APR/MAY/JUNE | 0 | 0 | 0 |

| Members | | | |
|-----------------------|------------------------|----------------------|---|
| RESULTS FOR 2022-2023 | | | |
| QUARTER | MEMBER GROWTH NET GOAL | MEMBER GROWTH ACTUAL | DROPPED MEMBERS ACTUAL (including transfers) |
| JULY/AUG/SEPT | 30 | 23 | 21 |
| OCT/NOV/DEC | 25 | 19 | 39 |
| JAN/FEB/MAR | 15 | 28 | 28 |
| APR/MAY/JUNE | 15 | 11 | 9 |

GOALS AND ACTUAL NEW CLUBS CUMULATIVE



GOALS AND ACTUAL MEMBERS CUMULATIVE



DROPPED CLUBS: 0

19 CLUBS OF 28 ADDED 1 OR MORE NEW MEMBERS

GENDER DISTRIBUTION

| | |
|----------------------|--------------|
| MALE | 418 (60.14%) |
| FEMALE | 277 (39.86%) |
| NON BINARY | 0 (0.00%) |
| PREFER NOT TO ANSWER | 0 (0.00%) |

DROPPED MEMBERS

[CLICK HERE FOR CUMULATIVE MEMBERSHIP DATA](#)

| | |
|----------------|-----------|
| DECEASED | 13 |
| CLUB CANCELLED | 0 |
| OTHER | 84 |
| TOTAL | 97 |

TOTAL FAMILY UNIT MEMBERS 137

FAMILY MEMBERS PAYING HALF DUES 69